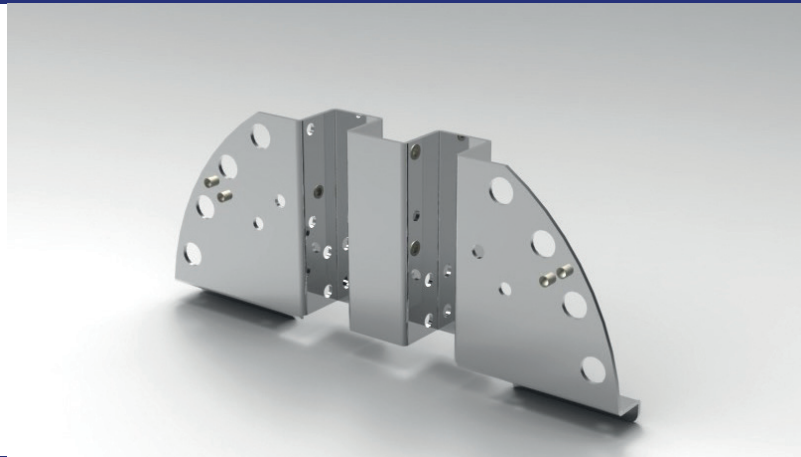




INDUSTRIAL SECTOR

Slim's comprehensive portfolio of products, ranging in thickness from 0,2mm to 3,00mm combined with a wide variety of alloys, enables our customers to employ the technical advantages of Slim Aluminium to enjoy maximum planning freedom.

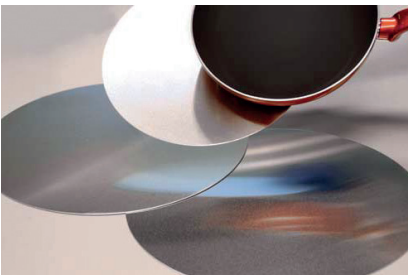


MARKETS



GENERAL ENGINEERING

Slim offers a wide range of aluminium products to cover all the needs of the industry.



CIRCLES & SHAPES

High stiffness and perfect formability are engineered to make our circle ideal for cookware, gas bottles, signage, and technical applications.



GENERAL ENGINEERING

Alloys Acc. to EN 573-3	EN-AW 1050A EN-AW 1200A EN-AW 3103 EN-AW 3105 EN-AW 3003 EN-AW 3005 EN-AW 5005 EN-AW 5052 EN-AW 5251 EN-AW 5754 EN-AW 6082 EN-AW 8006 EN-AW 8011A EN-AW 8079	
Temper Acc. to EN 515	O, H1x, H2x, H3x	
Thickness Tolerances Acc. To EN 485-4	From 0,2 to 3,0mm	
Coil Width Tolerances Acc. To EN 485-4	From 30mm to 1500*mm	*1600mm possible for some alloy/thickness combination
Sheet Width Tolerances Acc. To EN 485-4	From 500mm to 1250mm	Thickness up to 0,5mm
	From 500mm to 1600mm	Thickness from 0,8mm up to 3,0mm
Sheet Length Tolerances Acc. To EN 485-4	From 500mm to 2480mm	Thickness up to 0,5mm
	From 500mm to 6000mm	Thickness from 0,8mm up to 3,0mm
Surface (one side guaranteed)	Mill Finish	Ra [μ m] ~0,30
	Stucco embossed	From 0,25mm to 2,0mm
Surface treatment	Chemical degreasing, passivation (chromium free), reeling up to 0,5mm	
Mechanical properties	Acc. To EN 485-2	
Inner diameter roll [mm]	400/500/600mm	Without paper core 400/500 mm \leq 2,00mm possible with paper core
Outer diameter roll [mm]	max. 1800mm	
Surface protection	On request paper interleave or plastic film	PE film: Low-Medium-High adhesion and suitable for laser cutting

Other alloys/temper and dimensions can be produced on request. Thicknesses > 3,00mm to be evaluated.

CIRCLES AND SHAPES

Alloys Acc. to EN 573-3	EN-AW 1050A EN-AW 1200A EN-AW 3003 EN-AW 3103 EN-AW 4006 EN-AW 4007Mod EN-AW 5005 EN-AW 5251 EN-AW 8006	
Temper Acc. to EN 515	O – H1x – H2x	
Thickness Tolerance acc. to EN 851	From 1,0 up 6,0mm	
Circles diameter Tolerance acc. to EN 851	From 170 up 625mm	
Surface	Mill Finish	Ra [μ m] ~0,30
Blanks dimensions	Min. 195x195mm	
Mechanical properties	Acc. To EN 485-2	

Other alloys/temper and dimensions can be produced on request.